

**Mini Car Club of Auckland**  
Incorporated



# Club Magazine



Ellerslie 2000

**February/March 2000**

# Mini Car Club of Auckland Inc.

## Club Executive

<b><u>President:</u></b>	Warwick Robinson	479-1825
<b><u>Vice President:</u></b>	Les Gubb	298-5201
<b><u>Treasurer:</u></b>	Andrew Carter	415-9117
<b><u>Secretary:</u></b>	Chris McMurray	279-3052
<b><u>Club Captain:</u></b>	Anita Cowan	525-6786 / 025 415 475
<b><u>Committee:</u></b>	Chris Manning	833-9340
	Nathan Murrell	525-6786
	Jim Dixon	426-4945
	Nicky Phillips-Wyatt	832-2422
	Tom Parker	575-6255

---

Address correspondence to: **Mini Car Club of Auckland Inc**  
**P.O. Box 970**  
**Papakura**  
**Auckland**  
**New Zealand**

---

## Clubrooms

The Northern Sports Car Club  
Mt Richmond Domain  
Great South Road  
Otahuhu  
Ph. 276-0880

---

Contacting the Editor: Frits Schouten.  
Phone: (09) 235-7859 Home  
(09) 375-8999 ex5261 Business  
(021) 963-894 Mobile

E-Mail: fritss@ps.gen.nz  
Web: [http://ps.gen.nz/~fritss/mini\\_car\\_club/mini.htm](http://ps.gen.nz/~fritss/mini_car_club/mini.htm)  
Snail-Mail: 7 Carbine lane  
Waiuku 1852  
Auckland

I prefer files on disk if possible or good quality originals. Thanks.

The Deadline for the next issue is: **15 March 2000**

## **PRESIDENTS REPOR**

### **EL PRESIDENTO Warwick Robinson**

Y2K has started off really well.

6<sup>th</sup> February 2000. Galaxy of Cars @ Mc Shine, was a really good day. Beautiful weatl of other clubs and cars. Our show Show follows –

- 1<sup>st</sup> Allan Ritchie – Blue Clubman
- 2<sup>nd</sup> Paul Leahy – White & Black 1380
- 3<sup>rd</sup> Andrew Carter – Green Cooper.

13<sup>th</sup> February 2000. Concourse d'Ele racecourse. We had a selection of 8 beautif The star attraction was Patrick's Honda V Tec

Coming Events. Coming events of interest Taupo race track on 13<sup>th</sup> May 2000. Claudelands Classic and Collectable Motor St

Make sure vou attend March 7<sup>th</sup> Clubnight for



Looking smart on the roof.

Last years Big Boys Toys.



The crowd that came past us, was phenomenal. They had to, mind you, we were basically right in the middle of a main entrance. It was really good to see so many smiles on the faces of young and old. The old because they knew the Mini from years gone by and the young because that was the car they wanted for there next birthday. Don't you love it.....

Did we had a nice corner at Big Boys Toys or what.

Then last month we had Galaxy of Cars at Motat.



Again a very nice car show with 9 Minis on show.

The day started off with overcast. In fact I had a bit of rain on the way up there. Cold morning, overcast, a bit of rain, looks like this is not going to be a very nice day.

Boy was I wrong. Forgot about the sunblock, when I left home and got cooked on the day. It was a really nice day for all of us. Next year we should really try to overwhelm Galaxy of Cars with an uncountable number of Minis.

The Lions where so good to have a TV around the corner so nobody missed out on the race Prada had against America One. Good call Lions! The sausages went well too.

It is actually a nice place, MOTAT. The results of our show & shine will be announced during the next Club night.

# Concours De Elegance at Ellerslie Race Course.

Again a really fine event and very well attended by members of our Club.



**HERB  MORGAN  
TYRES & WHEELS**

84 ONEHUNGA MALL ( Down by the bridge)  
TELEPHONE 634-3169 or 636-6009; FAX 634-1805

There is not a lot I can say about this event. I wasn't there, you see. But what I can say is what I've heard. Most of the people I spoke to thought that it was a good event, well worth visiting.



**MINI SERVICES**  
AUCKLAND  
COOPER & S - RILEY ELF - CLUBMAN GT

PARTS  
REPAIRS  
MODIFICATIONS



IMPORTED  
PERFORMANCE  
& RESTORATION  
PARTS

**MURREY LOCKIE**  
PHONE OR FAX 09-412 7854

**17,18 &19 MARCH 2000**

## **Waikato Events Centre, Claudelands, HAMILTON**

### Greetings

The opening day of the show is not far away. A huge variety of Clubs have registered their interest and will be taking part in this exciting event. Both Saturday and Sunday have proved to be equally popular and as a result it is going to be a case of 'first in best placed'. Space has been reserved for clubs who have registered their intent to attend. Highlights include;

- 40 spectacular 1/18 models donated by Gavin Dawson and UT Models will be awarded to clubs and individuals for excellence or originality.
- Meguiars will be out among the clubs demonstrating how their product gets the best Out of your paintwork. We hear the odd freebee will be on offer.
- The major competition for clubs setting up for both days will be for prizes of \$750.00, \$500.00 & \$250.

As with previous years this promises to be a wonderful Club day out, and an opportunity to be a part of one of NZ's most exciting automotive events and a chance to win a prize.

A reminder to those clubs who are confirmed as coming;

- Gates open at 8.30 and clubs should be set up by 10.00.
- First there best placed
- Gates will be open from 4.00 for those ready to leave
- Drivers enter free but passengers will pay the entrance fee.

We are looking forward to seeing you at Claudelands over this weekend. We wish you well in the competitions. Whether you win or not you and your club members will have a great day out, and a chance to meet with other clubs.

We wish you happy and safe motoring and always remember to have fun.

*Proudly sponsored by*



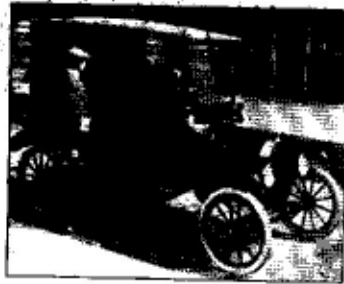
South China Morning Post  
Tues 21 Dec 1999

## Model T Ford drives away with honour as No 1 car

AGENCE FRANCE-PRESSE in Detroit

The Model T Ford, the world's first mass-produced car, has been voted car of the century by a panel of 132 trade journalists, a Ford spokesman said on Sunday.

The car scooped top spot with 742 points, edging out the four other finalists: the British Mini (all types), 617; the French Citroen DS, 567; the German Volkswagen Beetle,



A 1915 Model T Ford. The British Mini ran a distant second.

and the Porsche 911, 303. The first car to be produced on a moving assembly line, Ford sold more than 15 million Model Ts between 1908 and 1927. At its peak it accounted for 56.6 per cent of worldwide car production, and retailed for US\$850 (HK\$6,579), although production efficiencies later slashed that price to US\$260.

I bet you haven't seen this piece of news paper. It is amazing that not more has been published about it, here in New Zealand. Well, maybe we are too much focused on the Asian cars and have lost our interest in heritage cars like the Mini. It would always been a close contest between the Model T Ford and the Mini. Both for their own very good reasons. What really did the Citroen DS add to the motoring world. And what about the Volkswagen Beetle. Nah. The Model T Ford was the first mass produced car, which made motoring available to

South China Morning Post Tuesday 21 December 1999.

everyone. The Mini was the car that created a revolution again with the motor East/West and front wheel drive. Look at the today's small cars market.

The Box with 4 wheels on the extreme corners and an E/W motor driving the front wheels is the choice of today.



Forty years old and still looking stunning.

The Mini Cooper Enthus

Notice of Inte

# **Mini Sport**

to be held in Hamilt

27-28 May 20

From mid Morning Sat  
Afternoon Sur





The Lotus Club had their High Performance Day at Meremere Dragway on 26 February and they happened to invite us (and others). The field was not only Lotus and Minis. No, the variation of cars was really great. From entry level Minis up to top of the line Nissan 300ZXs which gave a wide range of performances. The slowest running Mini doing around 21 seconds for the 1/4 mile where the top hot shot Nissan was doing under 10 seconds!!!!

Unfortunately I don't have any pictures this event. But don't despair. I've a few from last years winter series.



(left) Tom doing away with the competition. (right) Ricky doing the same.



#### Some times of our own class, The MINI.

##### Practice times in seconds:

Micheal (Mini 850):	21.24,	21.16,	21.21
Tom (Mini 1000):	19.98,	19.95,	19.92
Jo-anne (Mini1000):	19.4,	19.48,	19.39
Frits (Clubman 1330):	18.76,	19.09,	18.77
Paul (Mini 1380):	16.6,	16.8,	16.2
Warrwick (Dejoux 1380):	15.64,	15.38,	15.4
Patrick (Clubman Vtec):	15.3,	14.7,	15.4

##### Race time in seconds:

Micheal (Mini 850):	21.8,	21.29		
Tom (Mini 1000):	19.76,	20.02,	19.97,	19.84
Jo-anne (Mini1000):	19.53			
Frits (Clubman 1330):	18.7,	18.66,	18.45	
Paul (Mini 1380):	16.5,	15.93,	16.2	
Warrwick (Dejoux 1380):	15.51,	14.8,	14.84	
Patrick (Clubman Vtec):	no times (broke a drive shaft)			

If you are really keen you can deduct the HP from 1/4 mile end speed with the following formula:  $HP = (x\sqrt{(S/225)})^W$

S = speed in mph at the end of the 1/4 mile.

W = start weight in pounds.

x = vehicle index number. Mini 850 (0.345), 1275GT (0.341)

You can also calculate the 1/4 mile potential with the following formula:

$$ET \text{ (in seconds)} = \sqrt[3]{((W*192*X)/(HP*0.318))}$$

The formulas are sourced from David Vizards book "Tuning BL's A-Series Engine"



Mini Car Club of Auckland

# Events

## MARCH

**7<sup>th</sup>, Tuesday: Clubnight 7:30pm Northern Sports Car Clubrooms, Mt Richmond Domain, Otahuhu**  
A short, fun scavenger hunt with a prize for the winner and runners-up, returning to the Clubrooms.

**17<sup>th</sup> to 19<sup>th</sup>, Friday to Sunday: The Classic & Collectable Motor Show & The Performance Car Motor Show, Claudelands Showgrounds, Hamilton**

The largest Motorshow in New Zealand. We will have a club display here on both Saturday and Sunday, with space for a limited number of well-presented cars, but extra passengers & spectators very welcome. Free entry to car's driver, passenger \$5 (normally \$8). Be at the March Clubnight to confirm your place and which day you would like to attend, or contact your club captain.

## APRIL

**4<sup>th</sup>, Tuesday: Clubnight 7:30pm Northern Sports Car Clubrooms, Mt Richmond Domain, Otahuhu**

Fun Trial Workshop. Sharpen up those trial skills! We will remind you of the best methods of note-reading and navigating, and make sure that drivers know how to listen to directions! This will be followed by a short trial to apply your skills. This is a good opportunity for those members who may be a bit rusty to brush up their trial knowledge, as well as for those members who don't have a drivable Mini but would like to participate in club events, perhaps as a navigator for another Mini owner.

**16<sup>th</sup>, Sunday: Tulip Rally, 1:00pm, meet at Northern Sports Car Clubrooms, Mt Richmond Domain, Otahuhu**

This is your chance to use the skills you learnt/practiced at Clubnight! If you don't have a Mini or Navigator, don't worry, we will try to match you up with a car or co-driver at Clubnight, just let us know what you need.

## MAY

**2<sup>nd</sup>, Tuesday: Clubnight 7:30pm Northern Sports Car Clubrooms, Mt Richmond Domain, Otahuhu**

Motorsport Hints night, preparation for Mini Fun Day (13 May) and Mini Sport 2000 (27 & 28 May). Some of our knowledgeable club members will help you prepare for these events. Help with equipment requirements, driving tips, how to make sure your car passes scrutineering and general advice. Also a good opportunity to organise convoys to the two events.

**13<sup>th</sup>, Saturday: Mini Fun Day, 8:30am, Taupo**

Helmets and overalls (cotton or flameproof) are required. The club does have some cotton overalls available to borrow. Cars must not have oil leaks. Any other requirements will be discussed at May Clubnight. This, as the name suggests, is a really fun day, and a fantastic opportunity to increase your confidence on a racetrack. Budget accommodation is available nearby, and some members may convoy down on Friday night. We usually have a meal out in Taupo on Saturday night.

**27<sup>th</sup> & 28<sup>th</sup>, Saturday & Sunday: Mini Sport 2000, Hosted by the Mini Cooper Enthusiasts Club, Hamilton**

A great weekend, crammed with fun events and Mini camaraderie. More info available from your club exec.

---

### Club ads.(just the one)

---

**FS:** White 1977 Mini 1000. Has been an excellent car for my late wife since 1980. Garaged for the last 2 years. Repainted 3 years ago but the job was not done very well. Engine running Ok. deregistered. No battery but electrics are working. Brakes and hydraulics need attention. Interior very good. \$1000.00 ono  
Contact: G.F.Hansby at (09)2757207.

---

**AABLE**  
**Part Connection**  
**Garry Greer**  
MANAGING DIRECTOR  
**SUBARU & BMC**  
**TYRES:** A Large Range Available • Free Fitting Service  
710 GT SOUTH ROAD.  
PENROSE  
AUCKLAND  
PH: (09) 579-5222  
FAX: (09) 571-0451